

Gira Event  
The new definition

**GIRA**

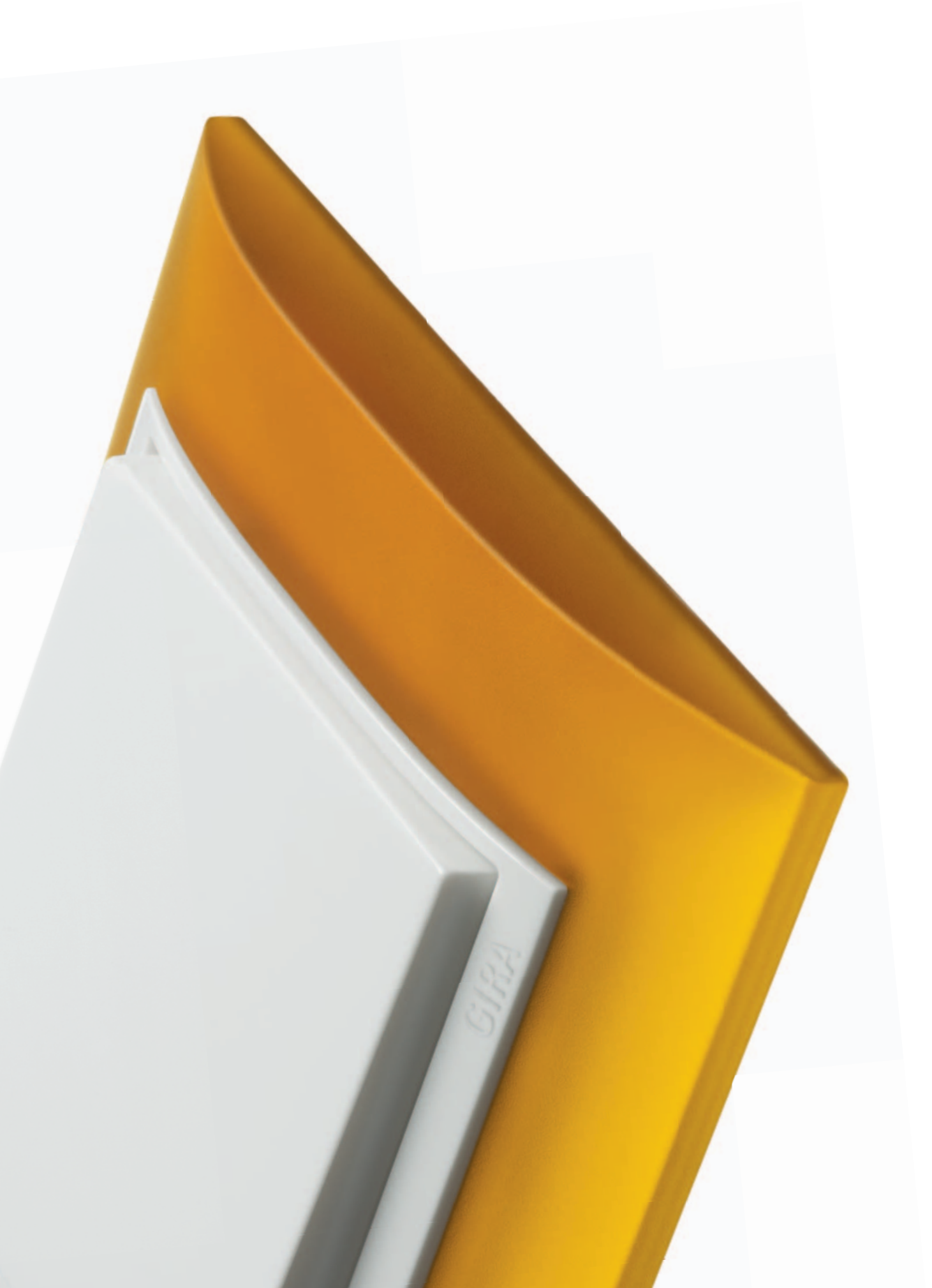


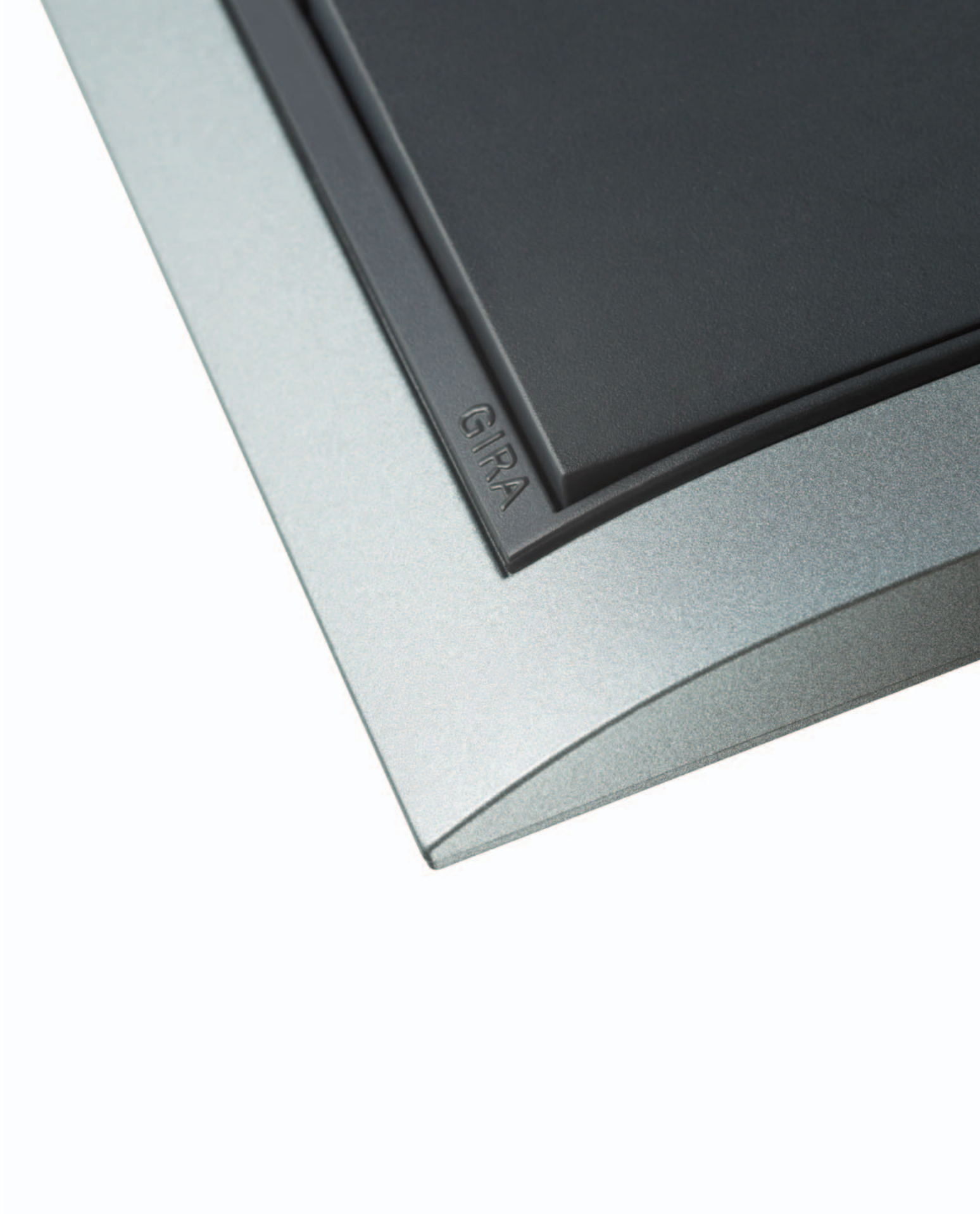


New. Gira Event Clear. Clear, deep appearance in six colours.



Gira Event Opaque. Seven colours in translucent material.





**Gira Event.** Four colour variants in high quality thermoplastic.

## Gira Event. The switch range

Gira Event is a remarkable switch range. It's not only the unique form that's exceptional but also the wide colour diversity. There are three design lines each with its own distinct material, and a total of 17 frame variants. Gira Event is available in the full System 55 assortment with over 280 components.

Award-winning design is our programme. Gira Event Opaque was awarded the red dot award as early as 1999. Gira Event Clear was awarded the iF product design award, red dot award and Plus X Award in 2009.

### New. Gira Event Clear

The clear, deep appearance with high-gloss surface is what really makes the new design line turn heads. Transparent plastic is colour-highlighted thanks to a special technology. This modifies the incidence of light upon the colours, giving them a greater intensity.



### Gira Event Opaque

The Gira Event Opaque frame variants are made of opaque, slightly translucent plastic. This renders colours at times brighter and at times darker, according to the incidence of light. The curved form of the frame receding to the edges emphasises this effect.



### Gira Event

The frame variants of dyed-through plastic are the third design line within the Event switch range together with Event Opaque and Event Clear. Four colour variants of high quality thermoplastic or high quality, coated thermoplastic in white and grey tones are available.





## Gira Event. Intelligent versatility

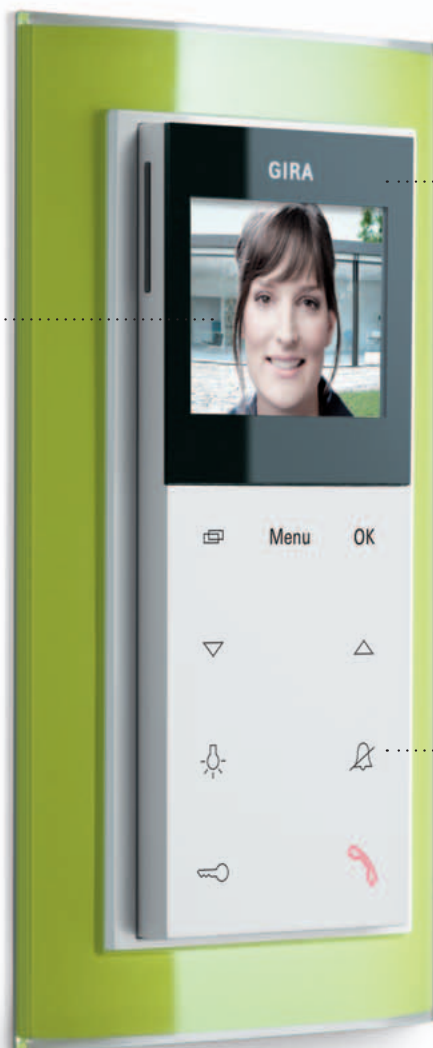
The intercom at the door, the dimmer on the wall or the many components for intelligent building technology that can be installed everywhere in the house: Gira Event forms a uniform framework for the most varied of functions, suitable for any ambience.



Gira surface-mounted home station video, Gira Event Clear green/pure white glossy  
55 x 127 x 21 mm. Compact and elegant as never before, in a two-gang cover frame. The surface-mounted home station video is homogeneous in the front, is controlled by a light touching of the buttons and has a latest-generation TFT colour display.

**2" TFT colour display**

The latest-generation high-resolution TFT colour display offers the user a high level of depth definition and an outstanding image quality from various viewing angles.



**Homogeneous front**

A special feature of the new home station: the homogeneous front of the device. Loudspeaker and microphone are not directly visible from the front.

**Capacitive sensor technology**

Comfortable operation of the buttons is via a light touching. Functions such as door opening, deactivating call tone, call acceptance and switching light on are carried out directly.

Gira Keyless In, Gira Event Clear, white/pure white glossy

Gira now offers the Keyless In products Keypad, Fingerprint and Transponder as further functions within the Gira door communication system. They are a convenient, secure alternative for access to the house, and completely without keys, since the technology is based on electronic or biometric systems.

**The Gira Keyless In Fingerprint** provides access control based on the unique biometric features of the human finger. The device uses a new type of fingerprint sensor. Using high-frequency technology, it evaluates the structures of the deepest layers of skin of the finger used.



**The Gira Keyless In Keypad** opens the door when a personal code is entered. Even a pressureless pressing of the buttons is recognised. This "capacitive technology" allows wear-free operation and thus enables greater security levels. The buttons are spared and no wear can be recognised. This means that it is not possible to discern number combinations which are entered frequently.



**The Gira Keyless In Transponder** is equipped with long-range transponder technology. The reader responds to the signal from the active transponder key or transponder card.

Gira push button sensor 3plus, 5-gang, Gira Event, colour aluminium/anthracite

The Gira push button sensor 3plus combines several functions of the KNX/EIB system within one device. In this way, lights can be switched on and off and dimmed, light scenes can be created and called up, and blinds controlled. In addition it also functions as a continuous heater regulator with time clock, thus allowing convenient single-room temperature control.



Via software, up to eight light scenes and 28 heating switching points for time-dependent operating mode switching can be stored. An automatic anti-freeze mechanism and extended control functions such as basic and additional heating and/or cooling can be set.

The illuminated display shows operating states, room temperature and temperature setpoints. The buttons on both sides of the display can be used to select temperature levels for the comfort, standby and night modes.

A total of ten buttons can be assigned a wide variety of functions for controlling the KNX/EIB system. The active button is indicated by a LED.

Gira flush-mounted radio RDS, Gira Event Clear, brown/pure white glossy

The Gira flush-mounted radio RDS is a radio for space saving installation in the wall. It can be simply installed in two flush-mounted boxes that aren't used for socket outlets for example. That means there's space for it even in the smallest area, it doesn't get in the way and it keeps your workspace clear.



**Six operating buttons**

regulate On/Off, station search, loud/quiet and station presets 1 and 2.

**The Gira flush-mounted radio RDS**

can be installed both vertically and horizontally. Practical for example in the morning in the bathroom: if an automatic control switch or other switch is connected for the room lighting, the radio can be switched on and off with the light.

Gira SCHUKO socket outlet with LED orientation light, Gira Event Clear, black/anthracite

Orientation in darkness: the Gira SCHUKO socket outlet with LED orientation light projects a corridor of light downwards with white LED and is equipped with a twilight sensor that automatically switches the light on with approaching darkness.



**The twilight sensor** ..... switches the light automatically on when darkness sets in.

**The energy-saving LED light** is located in the socket cover and when installing, comes into direct contact with the socket outlet base. This enables an easy upgrade of the Gira socket outlets already installed.



Gira Touchdimmer, Gira Event Opaque, white/anthracite

Just a light touch is enough to operate the Gira Touchdimmer, all thanks to capacitive sensor technology. The desired brightness level can be set directly here. The last selected LED indicates the brightness level just selected by lighting up.

The Gira Touchdimmer can be switched on directly to any desired dimming level – simply by specifically touching the row of LED dots.



An LED in the lower half of the operating surface lights up for orientation as long as the Gira Touchdimmer is switched off. When the lower half is touched, the Gira Touchdimmer switches on with a stored memory value. Lightly touching the lower operating surface is all that's required to switch off the Gira Touchdimmer again.

Gira control unit M217/M218, Gira Event Clear, black/pure white glossy

The M217 display unit and the Gira M218 operating unit, integrated in the Revox multiroom system M51, control music from the central system within individual rooms. The display unit shows track or station selection information selected by the operating buttons.

**The Gira M218 operating unit** forms the basis for control of the Revox multiroom system M51. As well as volume control and station control, the sound source can be selected and modified. Up to four timer functions can be integrated.



**The Gira M217 display unit** extends the control possibilities of the Gira M218 operating unit. The display shows information on the source currently played. And in addition to selecting a track or station, up to four timer functions can be programmed in each room.



## Gira Event. The functions

The Gira Event switch range is available in full assortment depth with over 280 components and includes all functions for intelligent building management: beginning with a wide spectrum of switches, dimmers and socket outlets to products for LED illumination and door communication and a host of functions for the Gira KNX/EIB system and the Gira radio bus system.

All product illustrations in Gira Event Clear, white/pure white glossy

Gira  
Door communication  
system



Surface-mounted  
home station video



Surface-mounted  
home station



Surface-mounted  
gong



Home station  
with 1.8" TFT  
colour display



Home station

Gira  
Keyless In



Keypad



Transponder



Fingerprint

Switching,  
Pressing,  
Dimming



Rocker  
switch



Rocker switch with  
inscription label



Touch control  
switch



Series control  
switch



Push button  
sensor 3,  
1-gang



Radio wall  
transmitter,  
3-gang



Universal  
rotary dimmer



Touch  
dimmer



Series  
dimmer



Touchdimmer



Automatic control  
switch 2



Automatic control  
switch



Electronic time  
clock easy

Gira  
Instabus KNX/EIB  
System



Push button  
sensor 3plus,  
5-gang



Push button  
sensor 3,  
1-gang



Push button  
sensor 3,  
3-gang



Info-display 2

Gira  
Radio bus system



Radio dimmer



Radio room temperature sensor with clock



Radio automatic control switch



Radio control button



Radio wall transmitter, 3-gang

Gira  
Blind control system



Blind series switch



Key switch



Top unit for control button



Electronic blind controller 2

Air-conditioning / heating control



Room temperature controller



Continuous regulator



Hygostat



Object regulator

Gira  
Audio systems



Flush-mounted radio RDS



Stereo loudspeaker connection box



High-end loudspeaker plug connector WBT



M217/M218 control unit for the Revox multiroom system

Data connection technology



TAE connection box with inscription space



Plug connector Modular Jack/Western with inscription space



Coaxial antenna socket for TV/radio with additional SAT connection



Data cap with inscription label and D-Sub connector



USB data port

Illumination and orientation



LED orientation light with pictogram



LED orientation light with pictogram



LED signal light



LED orientation light



LED orientation light with slat element



Name plate/Door sign



SCHUKO socket outlet with LED orientation light

Socket outlets



SCHUKO socket outlet with child protection



SCHUKO socket outlet with insert rotated by 30°



SCHUKO socket outlet with overvoltage protection



SCHUKO socket outlet with hinged cover and inscription space



SCHUKO socket outlet with LED orientation light

International Systems



Socket outlet British Standard



Socket outlet with protective contact, EURO-US



Chinese socket outlet



Socket outlet with earth pin and child protection

## Gira Event. The system

In the Gira Event switch range, diversity is the manifesto. Because it's part of the Gira System 55, the modular concept is what counts: all inserts are 55 x 55 mm large and can be freely combined with the various frames. Within the three design lines Event Clear, Event Opaque and Event, 17 frame variants and four insert colours thus offer a wide scope for variation.

Within System 55, Gira offers four colours for all 230 functions from the Gira range, whether for socket outlets, light switches, home stations, the many functions of the Gira KNX/EIB system or components from the Gira radio bus system.

Illustration: Gira Event Clear, sand with the four various insert colours



Pure white glossy



Cream white glossy



Colour aluminium



Anthracite

System 55 inserts



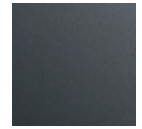
Pure white glossy



Cream white glossy



Colour aluminium



Anthracite

Gira Event Clear



Green/pure white glossy



White/pure white glossy



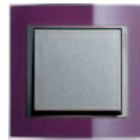
Black/pure white glossy



Sand/anthracite



Brown/cream white glossy



Aubergine/colour aluminium

Gira Event Opaque



Mint/pure white glossy



Blue/pure white glossy



Red/pure white glossy



Orange/pure white glossy



White/colour aluminium



Amber/pure white glossy



Dark brown/anthracite

Gira Event



Colour aluminium/anthracite



Anthracite/anthracite



Pure white matt/pure white glossy



Pure white glossy/pure white glossy





**Distributor**  
Gira Giersiepen GmbH & Co. KG

**Concept, design, editing**  
schmitz  
Visuelle Kommunikation,  
[www.hgschmitz.de](http://www.hgschmitz.de)

**Picture credits**  
Udo Kowalski, Wuppertal  
Henrik Spohler, Hamburg

**Lithography**  
vimago – Die Medien-Experten.  
Krefeld

Subject to technical changes

# GIRA

Gira  
Giersiepen GmbH & Co. KG  
Electrical Installation  
Systems

Industriegebiet Mermbach  
Dahlienstraße  
42477 Radevormwald

P. O. Box 1220  
42461 Radevormwald

Germany

Tel +49(0)2195-602-0  
Fax +49(0)2195-602-119

[www.gira.com](http://www.gira.com)  
[info@gira.com](mailto:info@gira.com)

[www.gira.com/event](http://www.gira.com/event)